

**SENSORS & SOFTWARE**®   
from **RADIODETECTION**

**LMX150**™  
FINDAR® GPR

# Utility locating with GPR made simple

Trying to avoid dangerous and costly hits  
to critical utilities?

Want to find more non-metallic utilities  
at your job site?

Locating shallow, small utilities giving  
you trouble?

If so, LMX150™ FINDAR® GPR is for you.





# Overview

LMX150™ FINDAR® GPR complements traditional pipe and cable locators and allows you to locate targets below the surface.

- Metal utilities, including pipes and cables
- Non-metallic pipes, including PVC and asbestos cement
- Concrete storm and sewer systems
- Utilities where installed tracer wiring has failed
- Underground storage tanks and drainage tiles
- Septic system components
- Fiber optic cables
- Non-utility structures such as vaults, foundation walls and concrete pads



**High visibility touch screen display unit**

- Free lifetime system software updates
- User selectable languages
- US Standard and Metric units

**On-site Reports**

- Produce instant on-site reports from your display unit

**USB**

- USB for easy data transfer

**Integrated GPS**

- Integrated GPS receiver for geo-referencing data

**Wi-Fi**

- Built-in Wi-Fi capability

**Compact Lightweight Fiberglass Cart Frame**

- No metal parts that would interfere with GPR signals
- Rugged, all-terrain cart with integrated odometer, easily maneuverable over any surface

**Optional External GPS**

- For high accuracy positioning and mapping

**Lead Acid Gel Cell Battery**

- Long lasting
- Swappable
- Locally available

**High Resolution GPR Sensor**

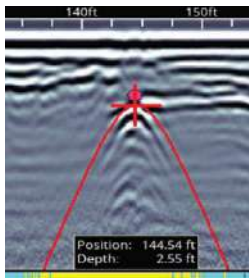
- Patented ultra-wideband (UWB) 500MHz GPR antenna
- Scanning depth up to 3m (10ft)



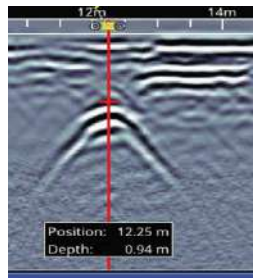
# LMX150™ FINDAR® GPR Features

## Enhance your productivity

### Easy Depth Calibration



### Pinpoint Depth & Location



No complex settings – Just press Start and push the cart

Use hyperbola-fitting to ensure accurate depth measurements and backup over the target to display its location and depth.

### Dynamic Stacking (DynaQ®)

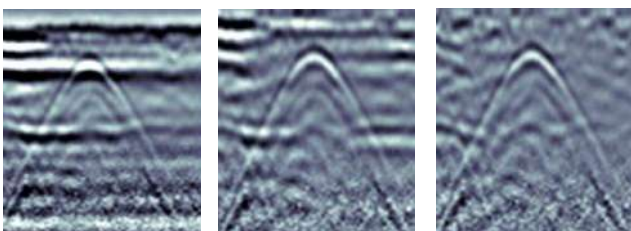


- White = No data (too fast!)
- Yellow = Moderate quality
- Light blue = Better quality
- Dark blue = Highest quality

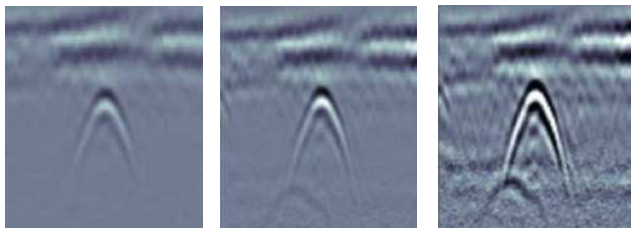
Better data quality with DynaQ – automatically adjusts stacking (averaging) based on your survey speed.

## Optimize visibility of your targets in the field

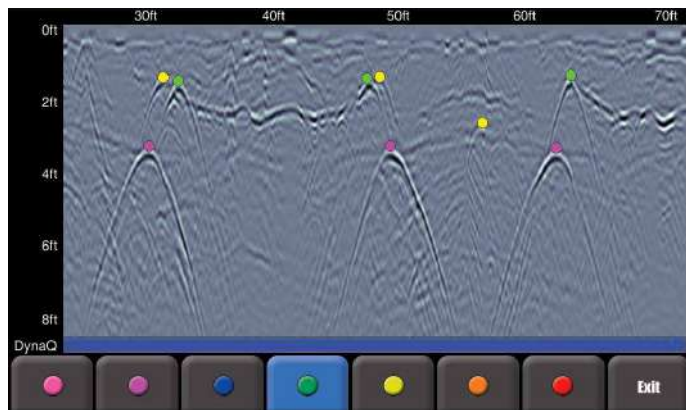
### Preset Filters



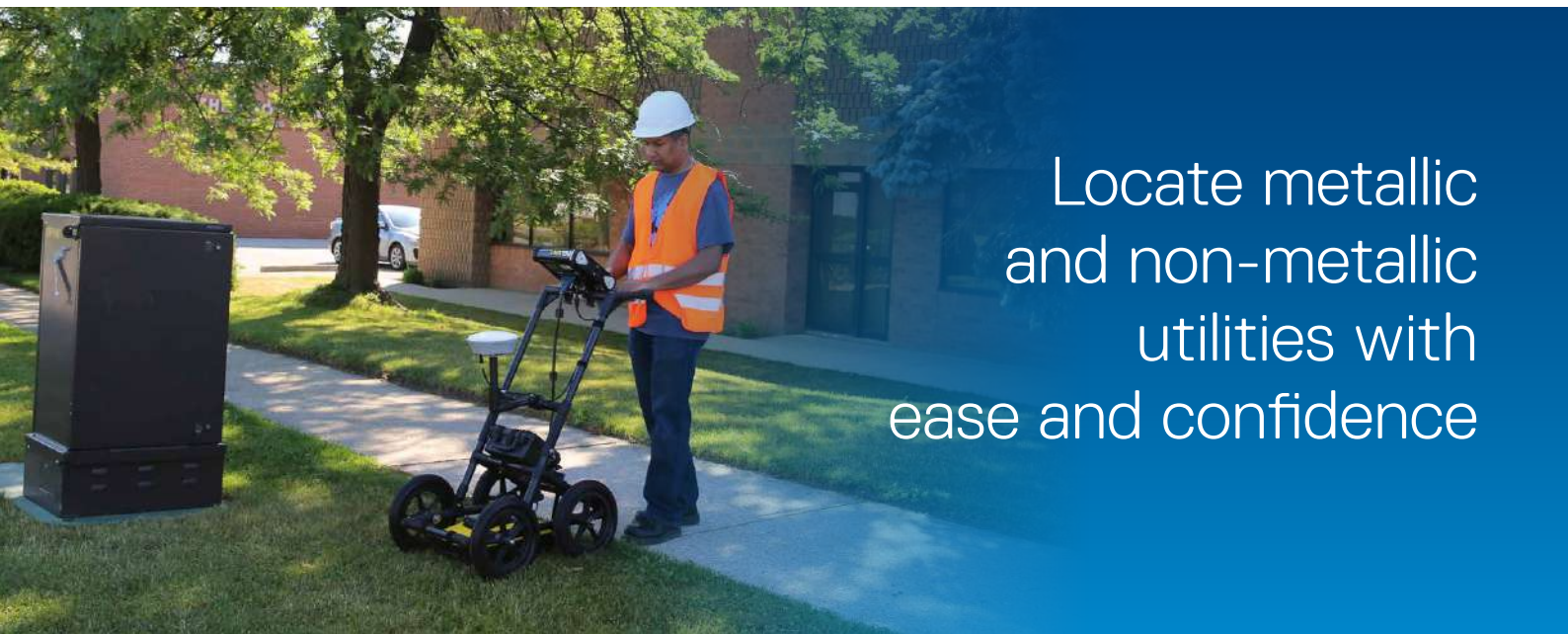
### Adjustable Gain



### Color-coded field interpretations



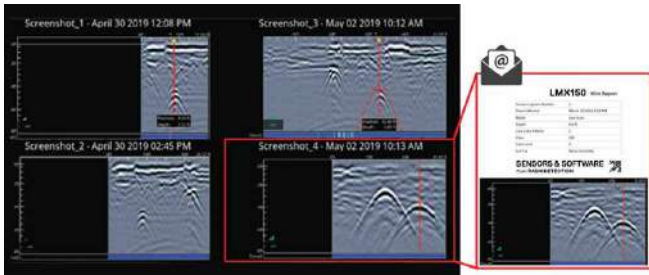
Classify your targets in real-time by selecting a color option and touching the screen.



Locate metallic and non-metallic utilities with ease and confidence

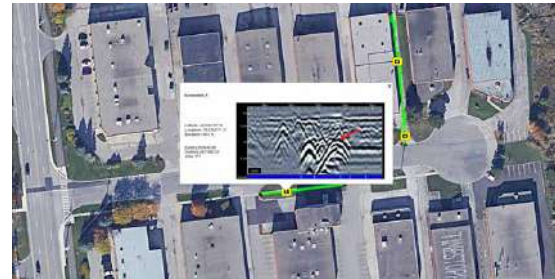
## Get faster deliverables

In-field Screenshot Gallery & Wi-Fi mini-reports



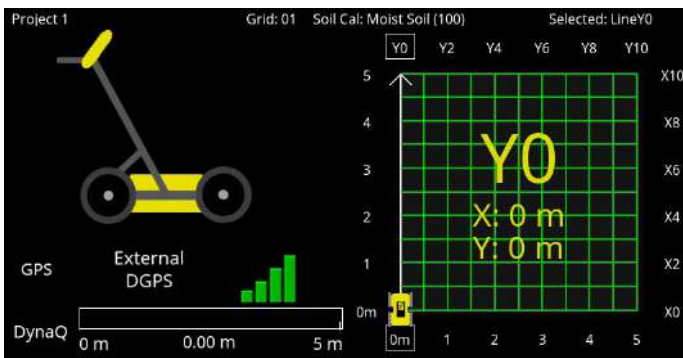
Manage & review your screenshots and email them in a Wi-Fi mini-report from the field.

Geo-tagged information for reports & archiving



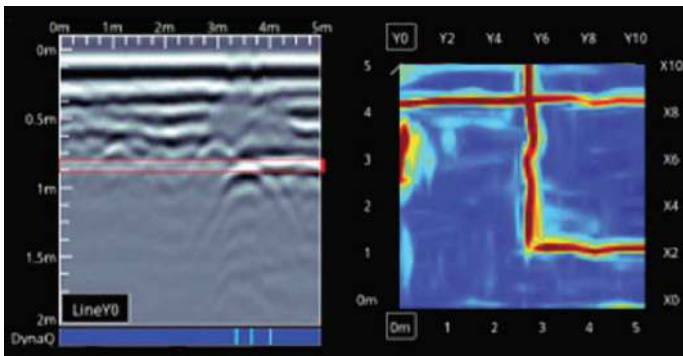
All screenshots are geo-tagged and exported in a KMZ file that is easily displayed in Google Earth.™

## Complete coverage of complex areas



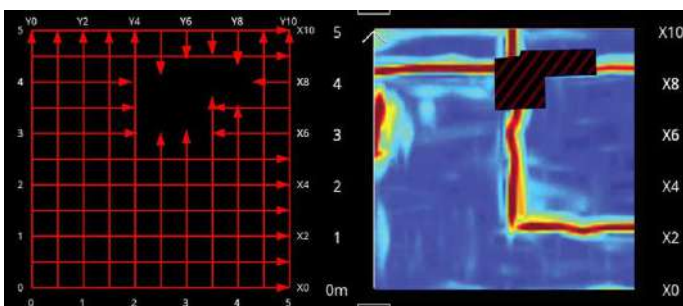
## Flexible & guided grid collection

The LMX150™ FINDAR® GPR guides you through the setup with pre-selected grid sizes. Stop lines early, or skip lines.



## In-field Depth slices

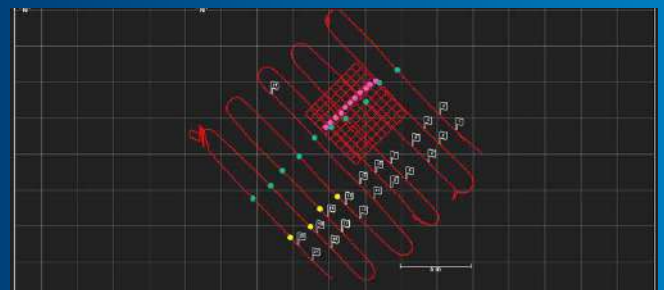
Process grid data into depth slices and move down through your data to visualize targets at different depths.



**Obstacle avoidance** System guides data collection around an obstacle in your grid.

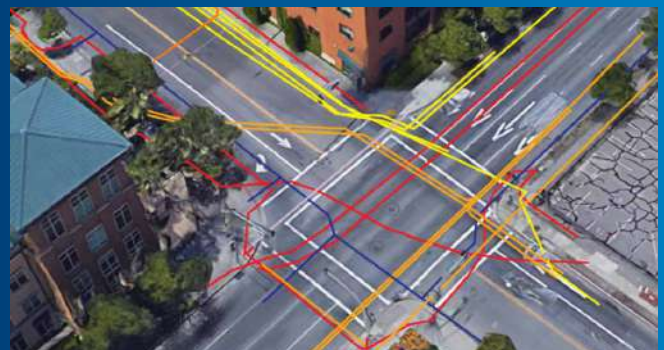
## Features unlocked with GPS

View your survey area in the field



Line scans, grids and field interpretations are displayed on the screen in a plan map view.

Export geo-referenced data to Google Earth™



KMZ output of lines, grid locations, interpretations, and screenshots.

Export geo-referenced data in spreadsheet (.csv files)

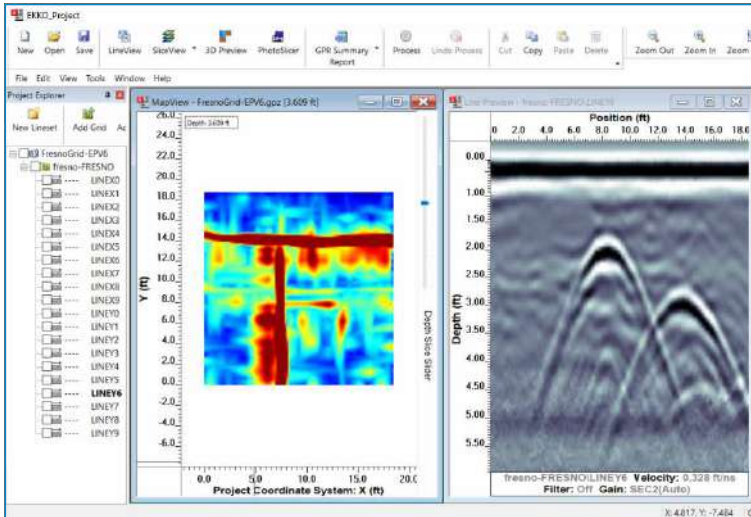
	A	B	C	D	E	F
1	Tool	Position (m)	Depth (m)	Latitude	Longitude	GPS-Elevation
2	Point	0.72	0.18	38.8345202	-9.1821844	16.63
3	Point	0.83	0.7	38.8345201	-9.1821826	16.6
4	Point	1.12	0.75	38.8345187	-9.1821798	16.59
5	Point	1.63	0.19	38.8345172	-9.1821759	16.56

Spreadsheet (.csv) file with flags and field interpretations to import into GIS or CAD software.



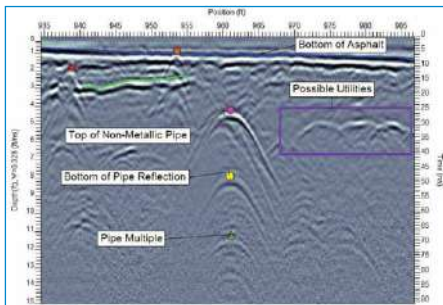
# EKKO\_Project™ Software

Visualize, Understand and Report your GPR results with the optional EKKO\_Project™ PC Software

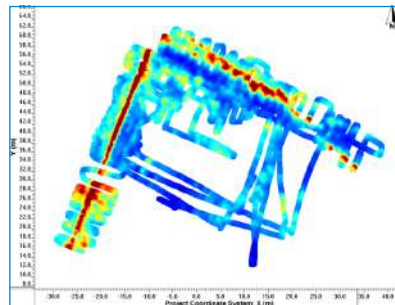


## Core

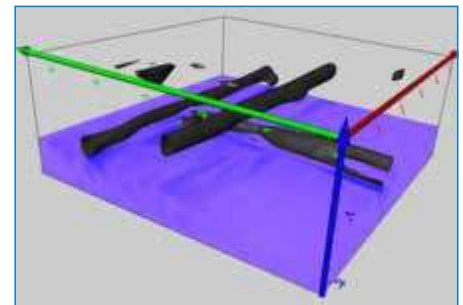
Organize your GPR data, photos and other files and save as a single project file. Easily create PDF reports of your findings.



Examine (Cross-sections)



Reveal (Depth Slices)



3D Reveal (3D Visualization)

## Specifications

Weight & Dimensions	
Size: 115 x 55 x 90 cm (45 x 21 x 35 in)	
Weight: 19 kg (41 lb) (including battery)	
Display Unit size: 21 cm (8 in) diagonal	
Power	
12 volt sealed lead acid gel cell	
Battery Capacity: 9.0 Ah	Battery Weight: 3.6 kg (7.9 lbs)
Battery Life: 4-6 hours	Charger: 110-240V

Environmental & Temperatures	
Ruggedized, environmentally sealed unit and connections	
IP65	Operating temperature range: -40°C to +50°C (-104°F to 122°F)
Regulatory Specifications	
Meets FCC 15.509, IC RSS-220 and ETSI EN-302066	
Data Storage	Depth
230 km (143 miles) of data	Up to 3 meters (10 feet)

## Useful resources to make the most of your LMX150™ FINDAR® GPR

- [Webinars and free online resources](#)
- [Utility Locating with GPR \(Nulca-accredited\) interactive and online course \(SensoftU.com\)](#)
- [Learn more about our training offerings](#)

## Our Mission

Provide best in class equipment and solutions, to prevent damage to critical infrastructure, manage assets and protect lives.

## Our Vision

To be the world's leader in the management of critical infrastructure and utilities.

## Our Locations



### USA

Raymond, ME  
Kearneysville, WV

### Canada

Vaughan, ON  
Mississauga, ON



### Europe

United Kingdom **HQ**  
France  
Germany  
The Netherlands



### Asia Pacific

India  
China  
Hong Kong  
Indonesia  
Australia

Visit: [www.sensoft.ca](http://www.sensoft.ca) Follow us on:    

Scan for more information

